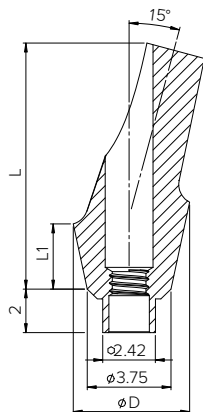


# CEMENT RETAINED RESTORATIONS | CASTABLE ABUTMENTS



DESIGN FEATURES	<ul style="list-style-type: none"> <li>• Plastic castable abutments and plastic press-on metal base abutments (ucla)</li> <li>• Straight and angled abutments: 15° and 25°</li> <li>• Wide range of diameters and lengths</li> <li>• Prefabricated with various collar heights</li> </ul>
CLINICAL BENEFITS	<ul style="list-style-type: none"> <li>• For fabrication of cement or screw retained abutments</li> <li>• For dentist/technician customization</li> <li>• Wide range of emergence profile abutment options</li> <li>• For crown or bridge restorations</li> </ul>
MATERIAL	Plastic: Delrin Metal base: Titanium Alloy (Ti-6Al-4V ELI) or Cobalt-Chrome Alloy

## ORDERING INFORMATION



STRAIGHT ANATOMIC		ANGLED ANATOMIC			
Straight	L (mm)	Angle 15°	Angle 25°	L (mm)	L1 (mm)
	9			9.5	1
NM-C4001		NM-C3001	NM-C3201		
	10			10.5	2
NM-C4002		NM-C3002	NM-C3202		
	11			11.5	3
NM-C4003		NM-C3003	NM-C3203		

Hexed	Non-Hexed	L (mm)	Ø D (mm)	Angle 15°	L (mm)	Ø D (mm)
		8.5	4.5		8.5	4.5
NM-C2004	NM-C2003			NM-C2005		

		10.5	3.25		NM-S8324 Included with all abutments & available separately
NM-C1002	NM-C1001				

Titanium Base	Co-Cr Base	L (mm)	Ø D (mm)
		10.5	4.5
NM-C2001	NM-C2002		