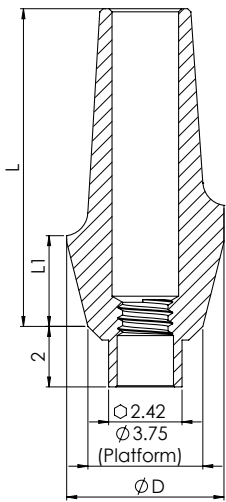







# CEMENT RETAINED RESTORATIONS | STRAIGHT ABUTMENTS



DESIGN FEATURES	<ul style="list-style-type: none"> <li>• Wide range of diameters and lengths</li> <li>• Prefabricated with various collar heights</li> </ul>
CLINICAL BENEFITS	<ul style="list-style-type: none"> <li>• Cement retained abutments</li> <li>• For dentist/technician customization</li> <li>• Wide range of emergence profile abutment options</li> </ul>
MATERIAL	Titanium Alloy (Ti-6Al-4V ELI)

## ORDERING INFORMATION



Anatomic	Ø D (mm)	L (mm)	L1 (mm)	Shoulder	Ø D (mm)	L (mm)	L1 (mm)
	5.2	9	1		4.5	8.5	1
NM-A4601				NM-A4801			
	5.2	10	2		4.5	9.5	2
NM-A4602				NM-A4802			
	5.2	11	3		4.5	10.5	3
NM-A4603				NM-A4803			
	5.2	12	4		4.5	11.5	4
NM-A4604				NM-A4804			
	Included with all abutments & available separately				Available separately		
NM-S8324				NM-C1005			

# CEMENT RETAINED RESTORATIONS | STRAIGHT ABUTMENTS

Standard	Ø D (mm)	L (mm)
----------	----------	--------



4.5

8.5

NM-A5908



4.5

9.5

NM-A5909



4.5

11.5

NM-A5911



4.5

12.5

NM-A5912

Shoulder, Narrow	Ø D (mm)	L (mm)	L1 (mm)
------------------	----------	--------	---------



3.75

8.5

0.5

NM-A5300



3.75

8.5

1.5

NM-A5301



3.75

8.5

2.5

NM-A5302

Wide	Ø D (mm)	L (mm)
------	----------	--------



5.5

9

NM-A5709



5.5

11

NM-A5711

Standard	Ø D (mm)	L (mm)
----------	----------	--------



4.5

8.5

NM-A5601



4.5

10.5

NM-A5602

Narrow	Ø D (mm)	L (mm)
--------	----------	--------



3.8

6

NM-A6006



3.8

8

NM-A6008

Mega	Ø D (mm)	L (mm)
------	----------	--------



9

15

NM-A5515



NM-S8324

Included with all abutments  
& available separately