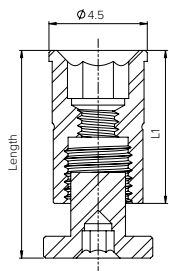



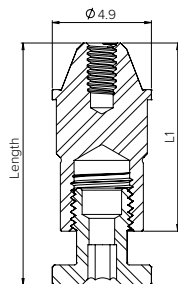
CAD/CAM COMPONENTS | DIGITAL ANALOG


DESIGN FEATURES	<ul style="list-style-type: none"> • Analog body and screw • Implant and multi-unit
CLINICAL BENEFITS	<ul style="list-style-type: none"> • Accurate and decisive fit in printed model • Removable • Reusable
MATERIAL	<ul style="list-style-type: none"> • Body: Stainless Steel • Screw: Titanium Alloy (Ti-6Al-4V ELI)

ORDERING INFORMATION



Digital Analog	Ø D (mm)	L (mm)	L1 (mm)	Ref. No
	4.5	9.5	7	NMDT6004



Digital Analog for Multi-Unit	Ø D (mm)	L (mm)	L1 (mm)	Ref. No
	4.9	12	9	NMDT7151

Noris Medical's CAD/CAM libraries are available for the following software: Exocad, 3Shape and Dental Wings. The most current libraries can be found in Noris Medical's website.



exocad

3shape

dental wings