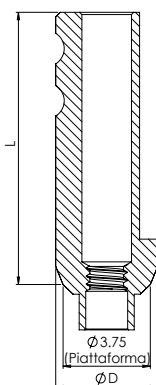
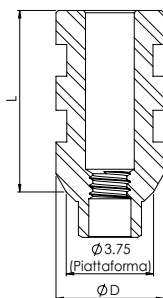
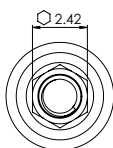















ACCESSORI | TRANSFER PER CUCCHIAIO APERTO E CHIUSO



CARATTERISTICHE	<ul style="list-style-type: none"> • Transfer per presa di impronte con cucchiaino aperto - scanatura di bloccaggio aggressiva per massima ritenzione • Transfer per presa di impronte con cucchiaino chiuso - scanatura rotonda per inserimento/rimozione agevoli
VANTAGGI	<ul style="list-style-type: none"> • Transfer per presa di impronte con cucchiaino aperto - elevata accuratezza • Transfer per presa di impronte con cucchiaino chiuso - siti con spazio inferiore • Transfer non esagonale per presa di impronte con cucchiaino aperto - perfetto per trasferire impianti multipli inclinati
MATERIALI	Corpo: acciaio inossidabile Vite: lega di titanio (Ti-6Al-4V ELI)

SPECIFICHE TECNICHE

TRANSFER PER CUCCHIAIO APERTO				TRANSFER PER CUCCHIAIO CHIUSO			
Transfer	Ø D (mm)	L (mm)		Transfer	Ø D (mm)	L (mm)	
 NM-T4008	4.75	8		 NM-T3601	4.75	8	
 NM-S1610	Vite 16mm Inclusa con il transfer sopra e disponibile separatamente			 NM-S1307	Vite 13mm Inclusa con il transfer sopra e disponibile separatamente		
 NM-T4203	3.85	12		 NM-T3507	3.85	12	
 NM-T4201	4.3	12		 NM-T3511	4.5	12	
 NM-T4012	4.75	12		 NM-S1610	Vite 16mm Inclusa con il transfer sopra e disponibile separatamente		
 NM-S2418	Vite 24mm Inclusa con il transfer sopra e disponibile separatamente			TRANSFER NON ESAGONALE			
Transfer	Ø D (mm)	L (mm)		Transfer	Ø D (mm)	L (mm)	
 NM-T4204	3.85	12		 NM-S2418	Vite 24mm Inclusa con il transfer sopra e disponibile separatamente		