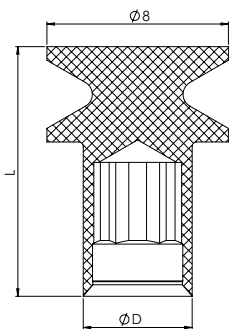
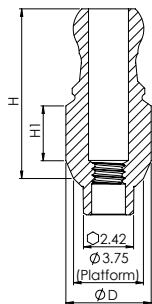








ACCESSORIES | SNAP-ON TRANSFER




| | |
|-------------------|--|
| DESIGN FEATURES | <ul style="list-style-type: none"> • Snap-on cap that snaps on transfer body that screws in to the implant • Designed for impressions using the closed-tray technique, in conjunction with cap T4402 • Transfer body gold color anodization |
| CLINICAL BENEFITS | <ul style="list-style-type: none"> • Enables closed tray impression transfer • Advantageous in limited opening situations • Transfer body can be used as esthetic abutments |
| MATERIAL | <p>Body & Screw: Titanium Alloy (Ti-6Al-4V ELI) Snap-On Cap: Derlin</p> |

ORDERING INFORMATION



| Transfer | Ø D (mm) | L1 (mm) |
|---|--|---------|
|  NM-T3802 | 4.8 | 2 |
|  NM-T3803 | 4.8 | 3 |
|  NM-T3804 | 4.8 | 4 |
|  NM-T3805 | 4.8 | 5 |
|  NM-T3806 | 4.8 | 6 |
|  NM-S8324 | Included with all abutments above & available separately | |

| Snap-On Cap for Ball Transfer | | |
|---|----------|--------|
| Cap | Ø D (mm) | L (mm) |
|  NM-T4402 | 4.8 | 11 |

