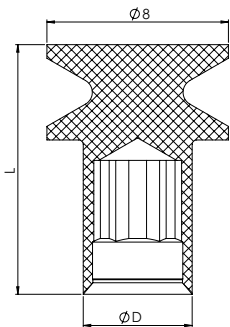
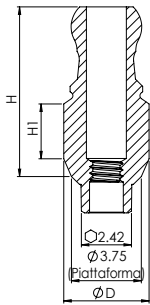








# ACCESSORI | TRANSFER SNAP-ON




CARATTERISTICHE	<ul style="list-style-type: none"> <li>• La cappetta Snap-on si aggancia sul corpo del transfer che si avvita all'impianto</li> <li>• Ideato per la presa di impronta a cucchiaio chiuso in combinazione con la cappetta dedicata</li> <li>• Anodizzazione del corpo color oro del transfer</li> </ul>
VANTAGGI	<ul style="list-style-type: none"> <li>• Permette la presa di impronta a cucchiaio chiuso</li> <li>• Pratico nelle situazioni di apertura limitata</li> <li>• Il corpo del transfer può essere usato anche come pilastro estetico</li> </ul>
MATERIALI	<p>Corpo e vite: lega di titanio (Ti-6Al-4V ELI) Cappetta Snap-on: plastica (delrin)</p>

## SPECIFICHE TECNICHE



Transfer	Ø D (mm)	L1 (mm)
 NM-T3802	4.8	2
 NM-T3803	4.8	3
 NM-T3804	4.8	4
 NM-T3805	4.8	5
 NM-T3806	4.8	6
 NM-S8324	Inclusa con i transfer sopra e disponibile separatamente	

Cappetta Snap-On		
Cappetta	Ø D (mm)	L (mm)
 NM-T4402	4.8	11

