

SCREW RETAINED & OVERDENTURE RESTORATIONS | VARI-CONNECT



DESIGN FEATURES	<ul style="list-style-type: none"> • Two-piece angled multi-unit or angled attachment • Wide range of angled multi-unit bases: 17°, 30°, 45°, 52° and 60° • Wide range of multi-unit adapters heights. • Ball-connect and flat-connect adapters • Gold color anodization for soft tissue adaptation
CLINICAL BENEFITS	<ul style="list-style-type: none"> • Angled screw retained abutments for non-removable restoration • Angled attachments for overdenture restoration • Wide range of gingival heights • Great option for angled implants
MATERIAL	Titanium Alloy (Ti-6Al-4V ELI)

ORDERING INFORMATION

Angle Vari-Connect	
--------------------	--

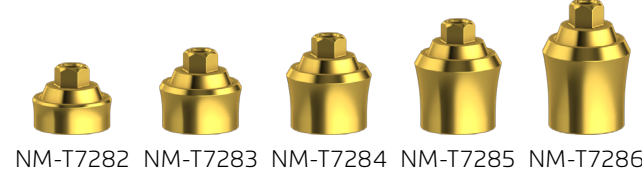
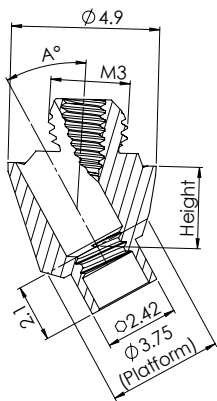
Vari-Connect Platform MULTI-UNIT Adapter				
---	--	--	--	--

	Vari-Connect Platform Height (mm)
--	-----------------------------------

	Multi-Unit Platform Adapter Height (mm)				
--	---	--	--	--	--

Angle°	2	3
--------	---	---

	2	3	4	5	6
--	---	---	---	---	---



Platform Adapter

