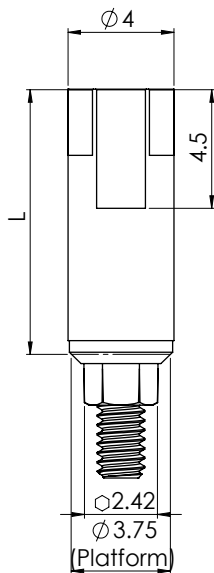


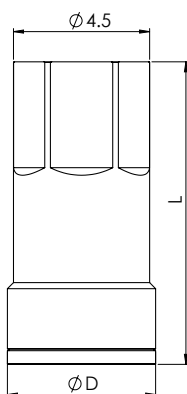
# CAD/CAM COMPONENTS | VERSATILE SCAN BODIES






DESIGN FEATURES	<ul style="list-style-type: none"> <li>• Metal base and PEEK body</li> <li>• Three optional lengths</li> <li>• Implant and Multi-unit</li> </ul>
CLINICAL BENEFITS	<ul style="list-style-type: none"> <li>• Scan as is. No need for anti-reflective coating spray</li> <li>• For use intraorally or with tabletop scanners.</li> <li>• High accuracy</li> <li>• Durable</li> <li>• Autoclavable</li> <li>• Radiopaque fit confirmation to implant/multi-unit</li> <li>• Fit various depth of Gingival tissue.</li> </ul>
MATERIAL	<ul style="list-style-type: none"> <li>• Base: Titanium Alloy (Ti-6Al-4V ELI)</li> <li>• Body: PEEK</li> </ul>




(\* USE SIRONA SCANBODIES FOR CEREC TO PLACE ON THE SCAN POST



## ORDERING INFORMATION

Scan Bodies	Ø D (mm)	L (mm)	Ref. No
	4.0	7	NM-C9007
	4.0	10	NM-C9010
	4.0	13	NM-C9013

Scan Post	Ø D (mm)	L (mm)	Ref. No
 (*)	4.3	9.8	NM-C2231

Scan Bodies	Ø D (mm)	L (mm)	Ref. No
	4.9	7	NM-C9207
	4.9	10	NM-C9210
	4.9	13	NM-C9213

Replacing NM-C9107, NM-C9110, NM-C9113