

CLASSIC SERIES | S-IMPLANT™

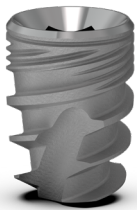
BONE TYPES	All bone types
PROSTHETICS PLATFORM	Internal hex
DESIGN FEATURES	<ul style="list-style-type: none"> • 6mm length internal hex implant • Various implant designs for soft or hard bone • Condensing variable threads design • Wide threads • High surface area
CLINICAL BENEFITS	<ul style="list-style-type: none"> • Avoid the mandibular nerve • Avoid the maxillary sinus • High primary stability • Distributes occlusal stress • Preserve crestal bone
AVAILABLE OPTIONS FOR TUFF™	Neck textures: <ul style="list-style-type: none"> • Machined surface • RBM surface

ORDERING INFORMATION

TUFF

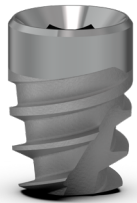
RBM Neck

Machined Neck



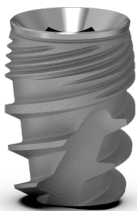
Ø D (mm)	Ø D0 (mm)	Ø D1 (mm)	L (mm)	Ref. No	Ref. No
3.75	1.8	3.1	6	NM-F3706	NMSF3706
4.2	2.1	3.5	6	NM-F4206	NMSF4206
5.0	2.7	4.5	6	NM-F5006	NMSF5006
6.0	3.8	5.2	6	NM-F6006	NMSF6006

TUFF PRO



Ø D (mm)	Ø D0 (mm)	Ø D1 (mm)	L (mm)	Ref. No
4.2	2.1	3.5	6	NMAF4206
5.0	2.7	4.5	6	NMAF5006

TUFF TT



Ø D (mm)	Ø D0 (mm)	Ø D1 (mm)	L (mm)	Ref. No
4.2	2.1	3.5	6	NM-F4306
5.0	2.7	4.2	6	NM-F5106
6.0	3.7	5.0	6	NM-F6106

ONYX



Ø D (mm)	Ø D1 (mm)	L (mm)	Ref. No
3.75	2.8	6	NM-G3706
4.2	3.2	6	NM-G4206
5.0	4.0	6	NM-G5006
6.0	5.0	6	NM-G6006

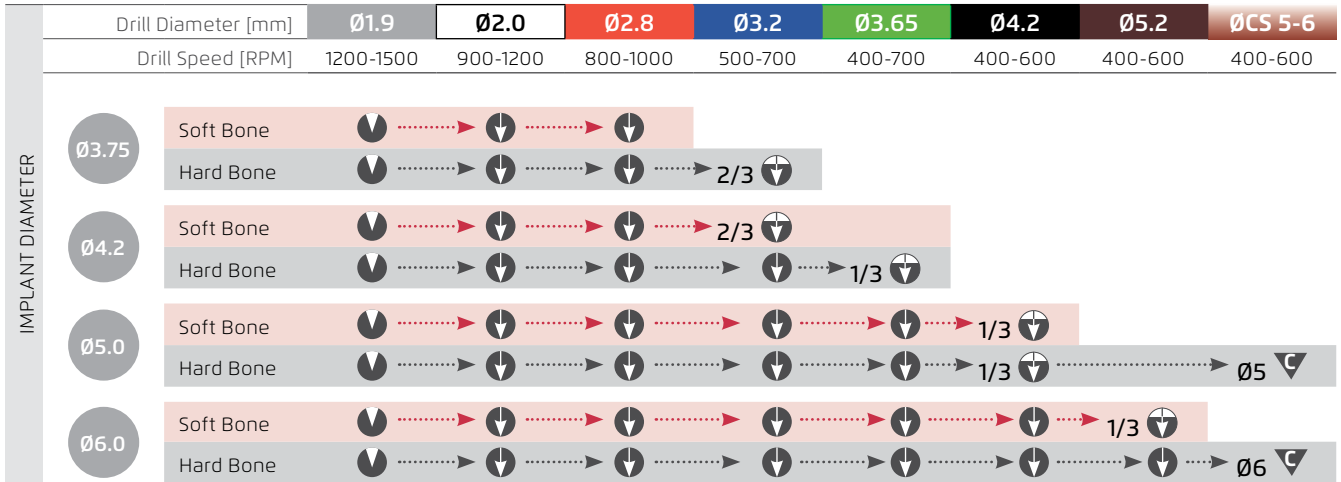
Cover Screw Included with all implants



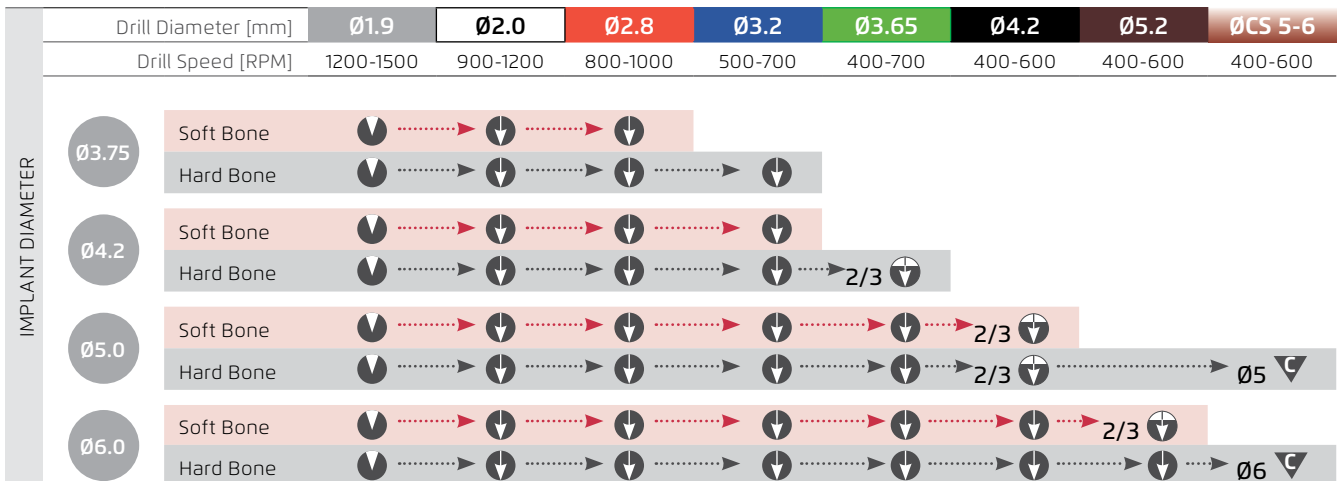
NM-S5023

CLASSIC SERIES | S-IMPLANT™

RECOMMENDED STRAIGHT DRILL PROTOCOL



RECOMMENDED STEP DRILL PROTOCOL



	Drill to mark osteotomy site		Drill osteotomy to implant		Drill osteotomy partially according to implant		Drill with countersink to prepare the crest
---	------------------------------	---	----------------------------	---	--	---	---

The recommended drill protocol procedure should not replace the dentist's/surgeon's judgment. The implants may be loaded for immediate function when good primary stability (above 35 Ncm) has been achieved and with appropriate occlusal loading.